

State of Wyoming Corner Record

(In compliance with the *CORNER PERPETUATION AND FILING ACT*, Wyoming Statutes, 1997 Section 33-29-140 et. seq., and the Rules and Regulations of the Board of Professional Engineers and Professional Land Surveyors)

Reverse side of this form may be used if more space is needed.

Record of original survey and citation of source of historical information (if corner is lost or obliterated). Description of corner monumentation evidence found and/or monument and accessories established to perpetuate the location of this corner. Sketch of relative location of monument, accessories, and reference points with course and distance to adjacent corner(s) (if determined in this survey). Method and rationale for reestablishment of lost or obliterated corner.

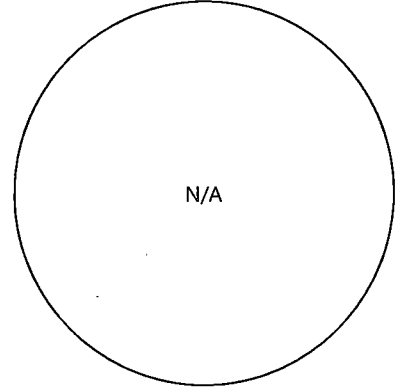
LOCATION: Northeast Corner of Section 11, T12N, R67W, 6th Principal Meridian, Laramie County.

RECORD: GLO - Set boulder 13X9X8

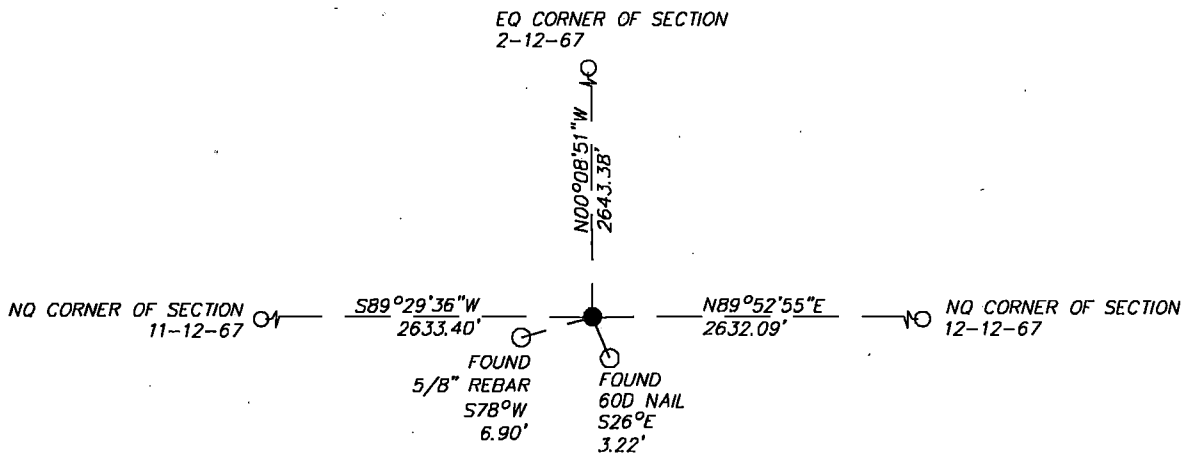
1998 - Doyle Abrahamson, PLS 599, found a 13x9x6 stone with 5 faint chiseled notches on south face in a small mound of stones.

RECOVERED: 2019 - Westwood Professional Services found a 13x9x6 stone in a small mound of stones and 2 ties set by Doyle Abrahamson.

RESET: Accepting location of the stone as the location of the corner.



Monument Inscription



Date of Field Work: 9/10/2019

Office Reference: 22237.01

Cross Index Plat

	1	2	3	4	5	6	7	8	9	10	11	12	13	14	15	16	17	18	19	20	21	22	23	24	25			
A																											A	
B																												B
C			6			5				4					3						2							C
D																												D
E																												E
F																												F
G																												G
H																												H
J																												J
K																												K
L																												L
M																												M
N																												N
O																												O
P																												P
Q																												Q
R																												R
S																												S
T																												T
U																												U
V																												V
W																												W
X																												X
Y																												Y
Z																												Z
	1	2	3	4	5	6	7	8	9	10	11	12	13	14	15	16	17	18	19	20	21	22	23	24	25			

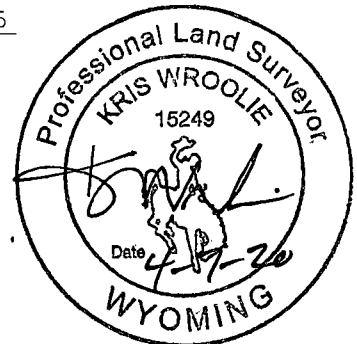
Firm/Agency, Address

Westwood Professional Services
 3701 12th St. N. Ste. 206
 St. Cloud, MN 56303

Telephone Number: (320)-253-9495

This corner record was prepared by me or under my direction and supervision.

SEAL & SIGNATURE



RECP #: 775806
 RECORDED 4/15/2020 AT 10:14 AM BK# 2668 PG# 238
 Debra K. Lee, CLERK OF LARAMIE COUNTY, WY PAGE 1 OF 1

Corner Name Northeast Corner Section 11, T 12 N, R 67 W, 6th P.M.

Cross-Index No.: E-21

County: Laramie Wyoming

SBRPEPLS/PLSW: March 1994; PLSW January 1998